

ANNUAL CAMPAIGN '21 BROAD STREET PRESBYTERIAN CHURCH

We invite you to share your estimate of giving for 2021 through one of the following ways:

- Complete this pledge card and mail it to the church.
- Drop it off at church on Sunday November 1st, during *Drive Through Church*, 11:00-12:00 noon or anytime.
- Email the information to BSPC Financial Assistant Janis Wright at jwright@bspc.org
- Use the online form at www.bspc.org/give

Thank you for supporting the mission and ministry of Broad Street Presbyterian Church

ANNUAL CAMPAIGN '21 BROAD STREET PRESBYTERIAN CHURCH

We invite you to share your estimate of giving for 2021 through one of the following ways:

- Complete this pledge card and mail it to the church.
- Drop it off at church on Sunday November 1st, during *Drive Through Church*, 11:00-12:00 noon or anytime.
- Email the information to BSPC Financial Assistant Janis Wright at jwright@bspc.org
- Use the online form at www.bspc.org/give

Thank you for supporting the mission and ministry of Broad Street Presbyterian Church.

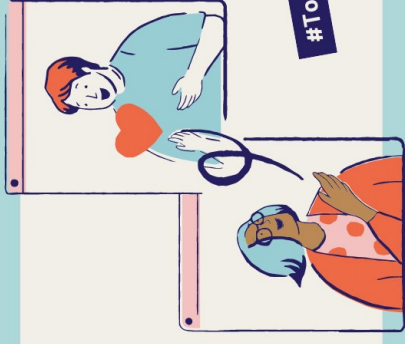
ANNUAL CAMPAIGN '21 BROAD STREET PRESBYTERIAN CHURCH

We invite you to share your estimate of giving for 2021 through one of the following ways:

- Complete this pledge card and mail it to the church.
- Drop it off at church on Sunday November 1st, during *Drive Through Church*, 11:00-12:00 noon or anytime.
- Email the information to BSPC Financial Assistant Janis Wright at jwright@bspc.org
- Use the online form at www.bspc.org/give

Thank you for supporting the mission and ministry of Broad Street Presbyterian Church.

BEING CHURCH



IN A PANDEMIC

BEING CHURCH



IN A PANDEMIC

BEING CHURCH



IN A PANDEMIC

**Being Church In a Pandemic
Annual Campaign '21**

Name:

Address:

Phone:

Email:

I/We want to contribute to the life of
Broad Street Presbyterian Church.

Check all that apply:

I/We pledge for our
annual amount.

ACH Automatic Bank Withdrawal

I/We plan to give of ourselves in volunteer
hours.

I/We are not able to pledge, but will give as we
are able

I/We are unsure at this time.

Comments . . .

During these unusual times we know life may bring unexpected changes...illness, a change in jobs, your family grows, a move. If you need to change your pledge at any time this year, it's ok. Just contact our financial office at jwright@bspc.org with your updated pledge information.

**Being Church In a Pandemic
Annual Campaign '21**

Name:

Address:

Phone:

Email:

I/We want to contribute to the life of
Broad Street Presbyterian Church.

Check all that apply:

I/We pledge for our
annual amount.

ACH Automatic Bank Withdrawal

I/We plan to give of ourselves in volunteer
hours.

I/We are not able to pledge, but will give as we
are able.

I/We are unsure at this time.

Comments . . .

During these unusual times we know life may bring unexpected changes...illness, a change in jobs, your family grows, a move. If you need to change your pledge at any time this year, it's ok. Just contact our financial office at jwright@bspc.org with your updated pledge information.

**Being Church In a Pandemic
Annual Campaign '21**

Name:

Address:

Phone:

Email:

I/We want to contribute to the life of
Broad Street Presbyterian Church.

Check all that apply:

I/We pledge for our
annual amount.

ACH Automatic Bank Withdrawal

I/We plan to give of ourselves in volunteer
hours.

I/We are not able to pledge, but will give as we
are able.

I/We are unsure at this time.

Comments . . .

During these unusual times we know life may bring unexpected changes...illness, a change in jobs, your family grows, a move. If you need to change your pledge at any time this year, it's ok. Just contact our financial office at jwright@bspc.org with your updated pledge information.